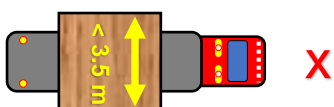


Ausnahmetransporte ATB Schweiz

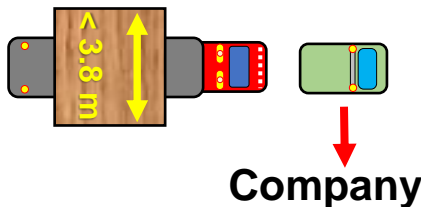
unter **< 3.5 m:**

Solofahrt



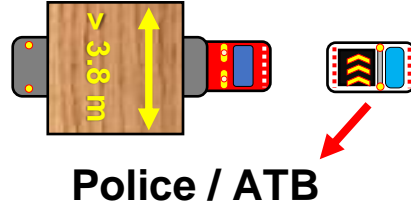
von **3.5 – 3.8 m:**

Eigenbegleitung



über **> 3.8 m:**

ATB / Polizei



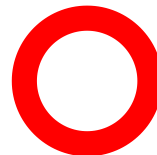
Autobahn / highway / autostrada / autoroute: Speed: **80 Km/h**



Über **> 3 m**
Breite:



06:30 - 08:30 h
16:30 - 18:30 h

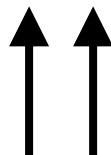
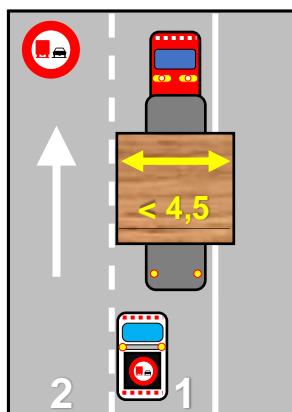


Bei einer Breite über **> 4.5 m** = Nachtfahrt / night drive / c. de nuit

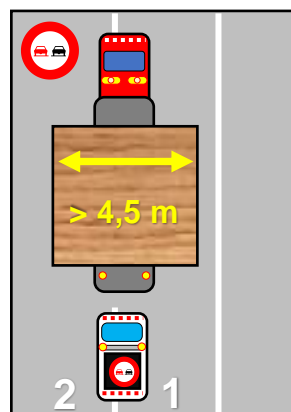
Autobahn



bis **< 4.5 m**



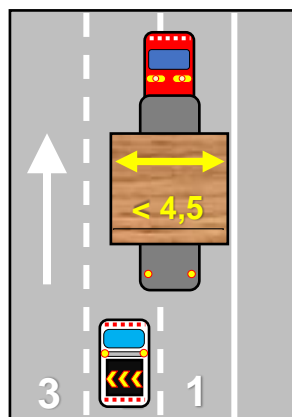
über **> 4.5 m**



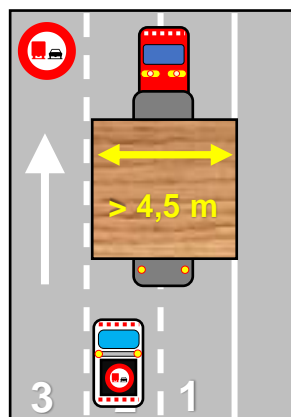
Autobahn



bis **< 4.5 m**



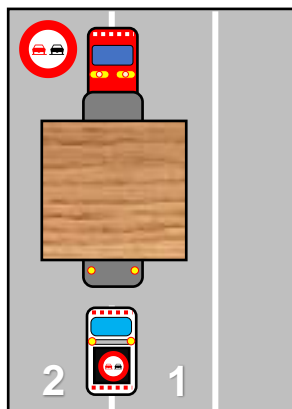
über **> 4.5 m**



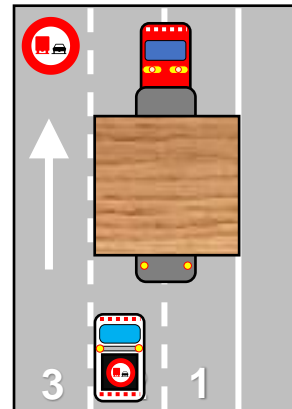
Tunnel



2-Streifig



3-Streifig



Autobahn / highway / autoroute / autostrada: Max. height / width

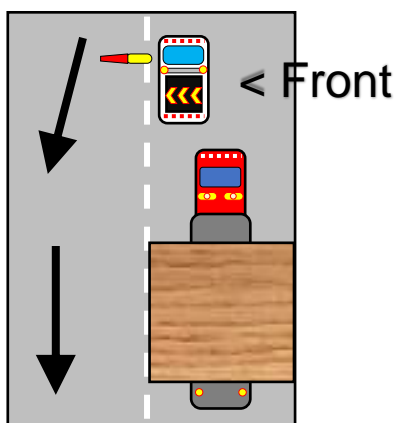


max. Höhe: **4.3 m**



max. Breite / width: **~ 6.5 m**

Ausserorts / long distance / a lunga distanza: Max. Speed: **80 Km/h**



Seit 01.01.2021 nicht mehr notwendig: **Flaggen an LKW-Front**



In der Schweiz nicht notwendig: «Convoi Exceptionnel» hinten / vorne